

**BE INTRIGUED
BY THE ANCIENT**

Sum

The Palace



WHERE DREAMS COME ALIVE

Sun International prides itself on being Africa's premium tourism, leisure and gaming group. For over 30 years, our wide range of resorts, luxury hotels and casinos have set the benchmark across South Africa and beyond, with each property offering guests a world of exhilarating experiences.

Creating lasting memories for guests is a core part of the brand. From soaking up some sun to fine dining, gripping game-plays and convenient conferencing, Sun International has the best services and facilities to turn each guest's desires into a memorable reality.

Sun International

AFRICAN OPULENCE

The Palace was created as an ancient royal residence for a fabled African King, boasting a six-story rotunda which was conceived as the royal entrance chamber overlooking a magnificent palatial lobby. The intricate detail of this architectural legend lavishes guests with noble hospitality and a fitting majestic atmosphere inspired by the ancient. From its inception in 1992, The Palace has enthralled and amazed visitors from all over the globe. This addition to the Pilanesberg landscape is dwarfed in years by the 1,300 million year old extinct volcanic site on which it is built.



The Palace offers a luxurious retreat away from the buzzing activities within the Sun City Resort and surroundings, but at the same time entices your inner explorer. A stay at The Palace is a chance to explore pristine African landscapes and striking wildlife, leaving guests with unforgettable experiences they can return home with.

MEMORABLE EXPLORATIONS

DIVE INTO AFRICA'S FINEST

Lounge away the afternoon beside the heated Olympic-sized outdoor swimming pool at The Palace Pool Deck, surrounded by lush tropical gardens. The pool is exclusive to The Palace guests only.



LUXURY REJUVENATION

The Royal Salon wellness spa and beauty salon encompasses luxury and elegance with a host of beauty treatments and massages that will leave you feeling refreshed and pampered. The spa is an ideal oasis for a holistic healing experience.



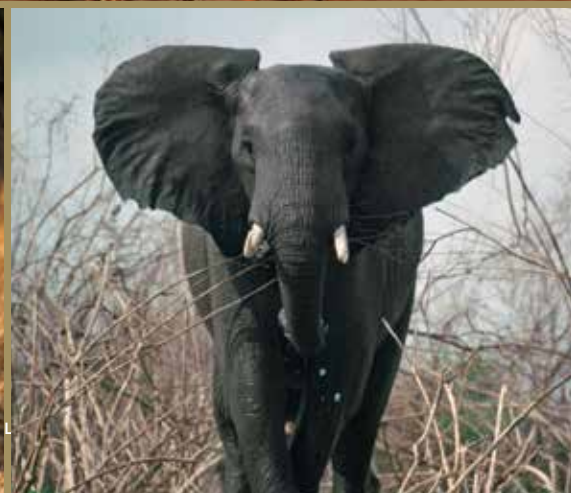
WALK WHERE CHAMPIONS HAVE TREAD

The Sun City Resort in which The Palace resides, is one of South Africa's premier golfing destinations. It is home to two 18-hole, par 72 world-famous golf courses designed by South African golfing legend Gary Player: the Lost City Golf Course and the Gary Player Golf Course, both of which have been designed to maximise the challenge for every handicap of golfer.



TIME FOR FUN IN THE SUN

Sun City's iconic water park – the Valley of Waves – offers family-friendly activities that appeal to adventurers of all ages. The Roaring Lagoon is a 6,500 square metre wave pool with hydraulic mechanisms that generate real waves of nearly two metres high, every 90 seconds. The Valley of Waves is the ideal place to soak up some sun with a delicious cocktail in hand.



A STRIKINGLY ELEVATED SAFARI

Undoubtedly, one of the best ways to view wildlife is in a hot air balloon that soars gracefully above the popular Pilanesberg National Park, offering a once-in-a-lifetime safari experience as the only safari of its kind available in South Africa.

BE SURROUNDED BY THE BIG 5

The 55,000 hectare, malaria-free Pilanesberg National Park, borders on the Sun City complex. It was opened in 1979, and is to date the largest game re-settlement project in the history of South Africa. The Mankwe Lake, a game draw-card, marks the centre of the ancient volcano. The term "Super Seven" was coined for the Park, as cheetah and wild dogs can be found, in addition to the big 5: elephant, lion, leopard, rhino and buffalo. The diverse vegetation supports a wealth of other mammals, bird, reptile, and tree species.

GET LOST IN THE FINER DETAILS

Imagine a place created to inspire possibility: a place where every detail has been considered, every moment measured and every experience uniquely envisioned. Now imagine it as the canvas to your big conference or event. At The Palace you can choose from various venues to host a conference, meeting or event which offers an unrivalled 5-star experience. Whatever your choice of venue or style, The Palace will take care of all the details while you take care of business.

HIGH ROLLERS WELCOME

The Palace Salon, situated in the finest hotel in the Sun City Resort, offers an exclusive gaming experience which is by invitation only. The gaming takes place in a discreet location where guests can enjoy high-end gaming etiquette in the lap of luxury.



CULINARY SPLENDOUR

The Palace eateries cater to every culinary need by offering patrons unique traditional African dining experiences with a hint of luxury and sophistication. The restaurants at The Palace are famous for their menus that are carefully curated by world-class executive chefs, as well as the lush surroundings that perfectly complements any meal.



PLUME
AT THE PALACE

AN INTIMATE SETTING

Entice your eager palate and inquisitive mind, come experience amazing textures paired with proudly South African wines. By reservation only. No under 12's





EXCLUSIVE DINING

The Grill Room is an exclusive restaurant which offers an intimate dining experience paired with finely selected cuisine, complemented by one of the most notable wine lists in the country. Reservations are essential.



TRADITIONAL DINING

Crystal Court restaurant offers patrons a traditional African dining experience with a unique hint of luxury and sophistication. By reservation only.



OUTDOOR DELIGHTS

The Palace Pool Deck is ideal for sipping a refreshing African-inspired cocktail while soaking up the sun or snacking on wood-fired pizzas and gourmet burgers. Available to The Palace guests only.

CULINARY GRANDEUR

The Tusk Bar and Lounge is where colonial grandeur meets grand explorations to capture your imagination. This unique safari-themed bar is the perfect place if you're looking for an unforgettable experience.

REDEFINED AFRICAN LUXURY AND ELEGANCE

The Palace boasts 338 exquisite rooms and suites, each fitted with luxurious handcrafted furniture befitting of royalty.

EXQUISITE AFRICAN LUXURY

Many a famous personality have experienced the opulence of the three luxurious suites which consists of the Desert African, King and Royal Suites. Each suite comes with its own butler, king-size beds, en-suite bathrooms with separate bath and shower, as well as luxury amenities. The King and African Suites each boast a sauna, and a Jacuzzi with a separate living room section, paired with a baby grand piano.



NEXT LEVEL LUXURY

The magnificent Superior Luxury Room offers guests the best of luxury and leisure. Each room sleeps two, with a king-size bed, and has an en-suite bathroom with a separate bath and shower, a marble topped vanity and luxury amenities. These beautiful rooms have a separate entrance foyer, air conditioning and 24-hour room service. Watch satellite channels on the flat screen TV from the lounge area, or admire the beautiful views of the gardens and swimming pool.



TWICE AS NICE

The Luxury Twin Room sleeps two with twin beds. The en-suite bathroom has a separate bath and shower, a marble-topped vanity and luxury amenities. These beautiful rooms have a separate entrance foyer, as well as a flat screen TV with satellite channels, air-conditioning, laptop safe, minibar available on request and 24-hour room service. Step outside onto the balcony and enjoy magnificent mountain views.





IN-ROOM FACILITIES

ROOM CONFIGURATION

- 24-hour Room Service
- Air Conditioning
- Electronic Safe
- Hairdryer
- International Direct Dial
- Tea and Coffee Making Facilities
- Telephone
- Satellite TV
- Universal Adaptor Socket
- Valet
- Voltage 220V
- WiFi
- Writing Desk

Luxury Twin Room	151
Superior Luxury Family Room	55
Accessible Family Room	3
Superior Luxury Room	78
Superior Luxury Pool-facing Room	35
Junior Suite	6
Superior Suite	6
Presidential Suite	4
Total Rooms	338

Reservations



★★★★★

Address: Sun City Resort, 0316,
North West Province, South Africa
GPS Co-ordinates: 25° 20' 54.97" S 27° 5' 58.8" E
Tel: +27 14 557 1000
Email: sceng@suninternational.com

Sun City Resort
 @SunCityResortSA

A *Sun* LUX COLLECTION HOTEL

SUN INTERNATIONAL HEAD OFFICE

6 Sandown Valley Crescent, Sandton,
Gauteng, South Africa
Tel: +27 11 780 7000
Fax: +27 11 780 7716

CENTRAL RESERVATIONS

Tel: +27 11 780 7800 / 7810
Fax: +27 11 780 7443
Email: crobook@suninternational.com

INTERNATIONAL RESERVATIONS

Tel: +27 11 780 7878
Fax: +27 11 780 7878
Email: naukmea@suninternational.com

Facilities & Activities

	BOARDWALK	CARNIVAL CITY	CAROUSEL	FEDERAL PALACE	FLAMINGO	GOLDEN VALLEY	GRANDWEST	MEROPA	MONTICELLO	NALEDI SUN	NAO CASINO	OCEAN SUN CASINO	SIBAYA	SUN CITY	THE PALACE	CASCADES	SOHO	CABANAS	THE MASLOW	THE TABLE BAY	TIME SQUARE	WILD COAST SUN	WINDMILL
FACILITIES																							
BABYSITTING	●	●	●	●	●	●	●	●	●	●	●	●	●	●	●	●	●	●	●	●	●	●	●
BEAUTY SALON	●	●	●	●	●	●	●	●	●	●	●	●	●	●	●	●	●	●	●	●	●	●	●
BUSINESS CENTRE	●	●	●	●	●	●	●	●	●	●	●	●	●	●	●	●	●	●	●	●	●	●	●
CONFERENCE	●	●	●	●	●	●	●	●	●	●	●	●	●	●	●	●	●	●	●	●	●	●	●
COURTESY BUS / TRANSFERS	●	●	●	●	●	●	●	●	●	●	●	●	●	●	●	●	●	●	●	●	●	●	●
CRÈCHE	●	●	●	●	●	●	●	●	●	●	●	●	●	●	●	●	●	●	●	●	●	●	●
GYM	●	●	●	●	●	●	●	●	●	●	●	●	●	●	●	●	●	●	●	●	●	●	●
HEALTH CENTRE	●	●	●	●	●	●	●	●	●	●	●	●	●	●	●	●	●	●	●	●	●	●	●
HELIPAD / HELIPORT	●	●	●	●	●	●	●	●	●	●	●	●	●	●	●	●	●	●	●	●	●	●	●
RESTAURANT	●	●	●	●	●	●	●	●	●	●	●	●	●	●	●	●	●	●	●	●	●	●	●
SAUNA / STEAM ROOM	●	●	●	●	●	●	●	●	●	●	●	●	●	●	●	●	●	●	●	●	●	●	●
SWIMMING POOL	●	●	●	●	●	●	●	●	●	●	●	●	●	●	●	●	●	●	●	●	●	●	●
SPA	●	●	●	●	●	●	●	●	●	●	●	●	●	●	●	●	●	●	●	●	●	●	●
WEDDING CHAPEL	●	●	●	●	●	●	●	●	●	●	●	●	●	●	●	●	●	●	●	●	●	●	●
ACTIVITIES																							
ARCHERY	●	●	●	●	●	●	●	●	●	●	●	●	●	●	●	●	●	●	●	●	●	●	●
BIRD/REPTILE PARK	●	●	●	●	●	●	●	●	●	●	●	●	●	●	●	●	●	●	●	●	●	●	●
BOWLS	●	●	●	●	●	●	●	●	●	●	●	●	●	●	●	●	●	●	●	●	●	●	●
CHILDREN'S ENTERTAINMENT	●	●	●	●	●	●	●	●	●	●	●	●	●	●	●	●	●	●	●	●	●	●	●
CINEMA	●	●	●	●	●	●	●	●	●	●	●	●	●	●	●	●	●	●	●	●	●	●	●
CULTURAL VILLAGE	●	●	●	●	●	●	●	●	●	●	●	●	●	●	●	●	●	●	●	●	●	●	●
DRUMMING	●	●	●	●	●	●	●	●	●	●	●	●	●	●	●	●	●	●	●	●	●	●	●
FISHING	●	●	●	●	●	●	●	●	●	●	●	●	●	●	●	●	●	●	●	●	●	●	●
FAMILY BUSH WALKS	●	●	●	●	●	●	●	●	●	●	●	●	●	●	●	●	●	●	●	●	●	●	●
GAME DRIVE	●	●	●	●	●	●	●	●	●	●	●	●	●	●	●	●	●	●	●	●	●	●	●
GOLF	●	●	●	●	●	●	●	●	●	●	●	●	●	●	●	●	●	●	●	●	●	●	●
HORSE RIDING	●	●	●	●	●	●	●	●	●	●	●	●	●	●	●	●	●	●	●	●	●	●	●
HOT AIR BALLOONING	●	●	●	●	●	●	●	●	●	●	●	●	●	●	●	●	●	●	●	●	●	●	●
ICE RINK	●	●	●	●	●	●	●	●	●	●	●	●	●	●	●	●	●	●	●	●	●	●	●
JOGGING / MOUNTAIN BIKE TRAIL	●	●	●	●	●	●	●	●	●	●	●	●	●	●	●	●	●	●	●	●	●	●	●
KIDDIES STEAM TRAIN	●	●	●	●	●	●	●	●	●	●	●	●	●	●	●	●	●	●	●	●	●	●	●
MAZE	●	●	●	●	●	●	●	●	●	●	●	●	●	●	●	●	●	●	●	●	●	●	●
MINI GOLF	●	●	●	●	●	●	●	●	●	●	●	●	●	●	●	●	●	●	●	●	●	●	●
NIGHTCLUB	●	●	●	●	●	●	●	●	●	●	●	●	●	●	●	●	●	●	●	●	●	●	●
PARAGLIDING	●	●	●	●	●	●	●	●	●	●	●	●	●	●	●	●	●	●	●	●	●	●	●
QUAD BIKES / GO-KARTS	●	●	●	●	●	●	●	●	●	●	●	●	●	●	●	●	●	●	●	●	●	●	●
RHINO NOTCHING	●	●	●	●	●	●	●	●	●	●	●	●	●	●	●	●	●	●	●	●	●	●	●
RIVER / LAKE CRUISE	●	●	●	●	●	●	●	●	●	●	●	●	●	●	●	●	●	●	●	●	●	●	●
ROPE ADVENTURE COURSE	●	●	●	●	●	●	●	●	●	●	●	●	●	●	●	●	●	●	●	●	●	●	●
SCENIC FLIGHTS	●	●	●	●	●	●	●	●	●	●	●	●	●	●	●	●	●	●	●	●	●	●	●
SCOOTERS / OFF-ROAD BIKES	●	●	●	●	●	●	●	●	●	●	●	●	●	●	●	●	●	●	●	●	●	●	●
SEGWAY	●	●	●	●	●	●	●	●	●	●	●	●	●	●	●	●	●	●	●	●	●	●	●
SHOPPING	●	●	●	●	●	●	●	●	●	●	●	●	●	●	●	●	●	●	●	●	●	●	●
SLOTS CASINO	●	●	●	●	●	●	●	●	●	●	●	●	●	●	●	●	●	●	●	●	●	●	●
SNOOKER / BILLIARDS / POOL	●	●	●	●	●	●	●	●	●	●	●	●	●	●	●	●	●	●	●	●	●	●	●
SQUASH	●	●	●	●	●	●	●	●	●	●	●	●	●	●	●	●	●	●	●	●	●	●	●
TABLES CASINO	●	●	●	●	●	●	●	●	●	●	●	●	●	●	●	●	●	●	●	●	●	●	●
TABLE TENNIS	●	●	●	●	●	●	●	●	●	●	●	●	●	●	●	●	●	●	●	●	●	●	●
TENNIS	●	●	●	●	●	●	●	●	●	●	●	●	●	●	●	●	●	●	●	●	●	●	●
TEN-PIN BOWLING	●	●	●	●	●	●	●	●	●	●	●	●	●	●	●	●	●	●	●	●	●	●	●
THEATRE	●	●	●	●	●	●	●	●	●	●	●	●	●	●	●	●	●	●	●	●	●	●	●
VOLLEY BALL	●	●	●	●	●	●	●	●	●	●	●	●	●	●	●	●	●	●	●	●	●	●	●
WATERSPORT	●	●	●	●	●	●	●	●	●	●	●	●	●	●	●	●	●	●	●	●	●	●	●
ZIPSLIDE	●	●	●	●	●	●	●	●	●	●	●	●	●	●	●	●	●	●	●	●	●	●	●

● Nearby ● Arranged by Request ▲ Seasonal

ACCOMMODATION

- 1 BUSH BUNGALOWS
- 2 CABANAS
- 3 CASCADES
- 4 SOHO
- 5 SUN VACATION CLUB
- 6 THE PALACE

FACILITIES

- 7 AMPHITHEATRE
- 8 CLINIC
- 9 CRODILE LOUNGE
- 10 FRONT ENTRANCE
- 11 GARY PLAYER COUNTRY & HEALTHY SPA
- 12 GOLF PARKING
- 13 GPCC HALFWAY HOUSE
- 14 SKYTRAIN STATION
- 15 SUN CENTRAL
- 16 SUN PARK
- 17 THE PALACE VALET PARKING
- 18 WELCOME CENTRE
- 19 WIND CHIME WEDDING CHAPEL

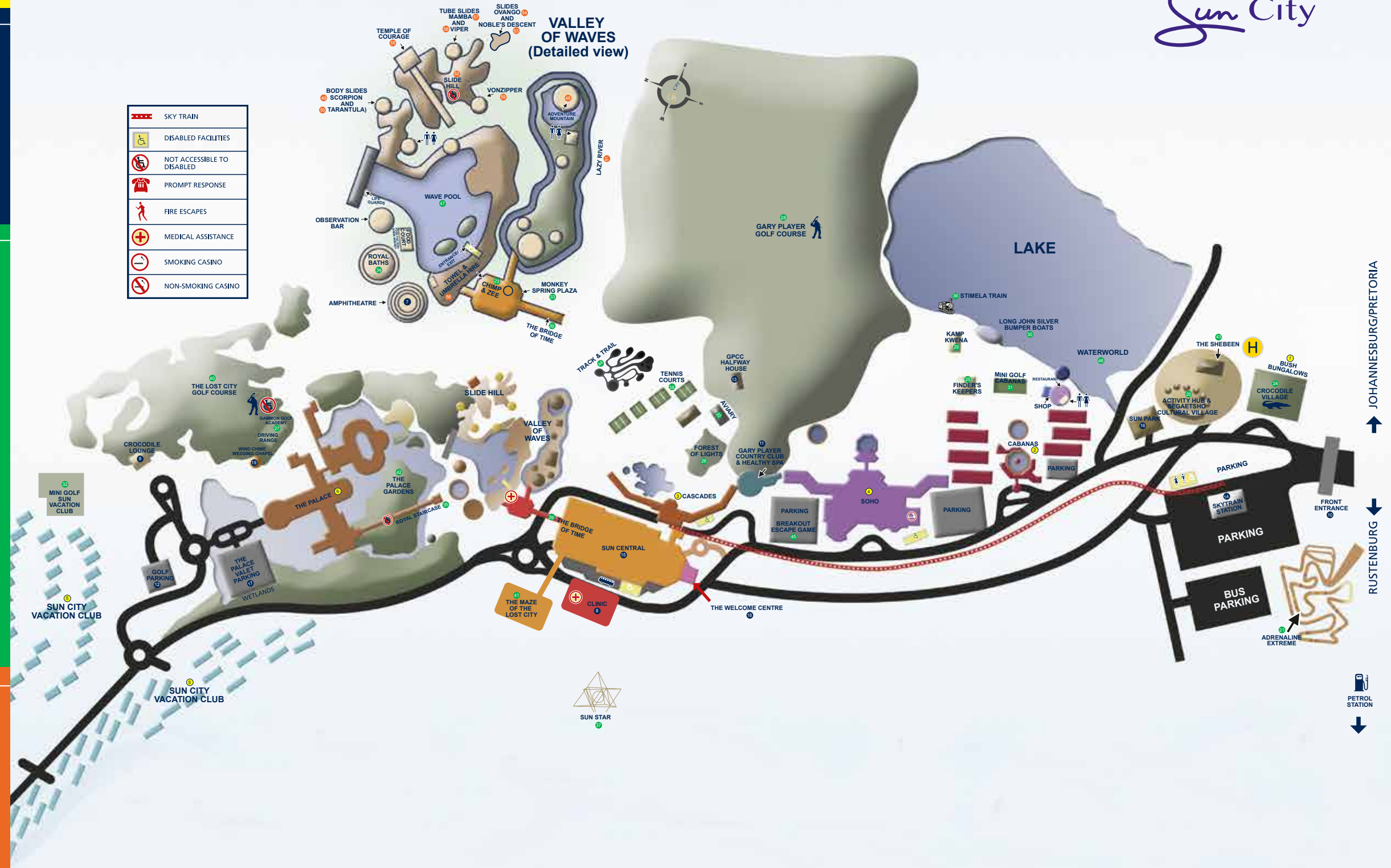
ACTIVITIES

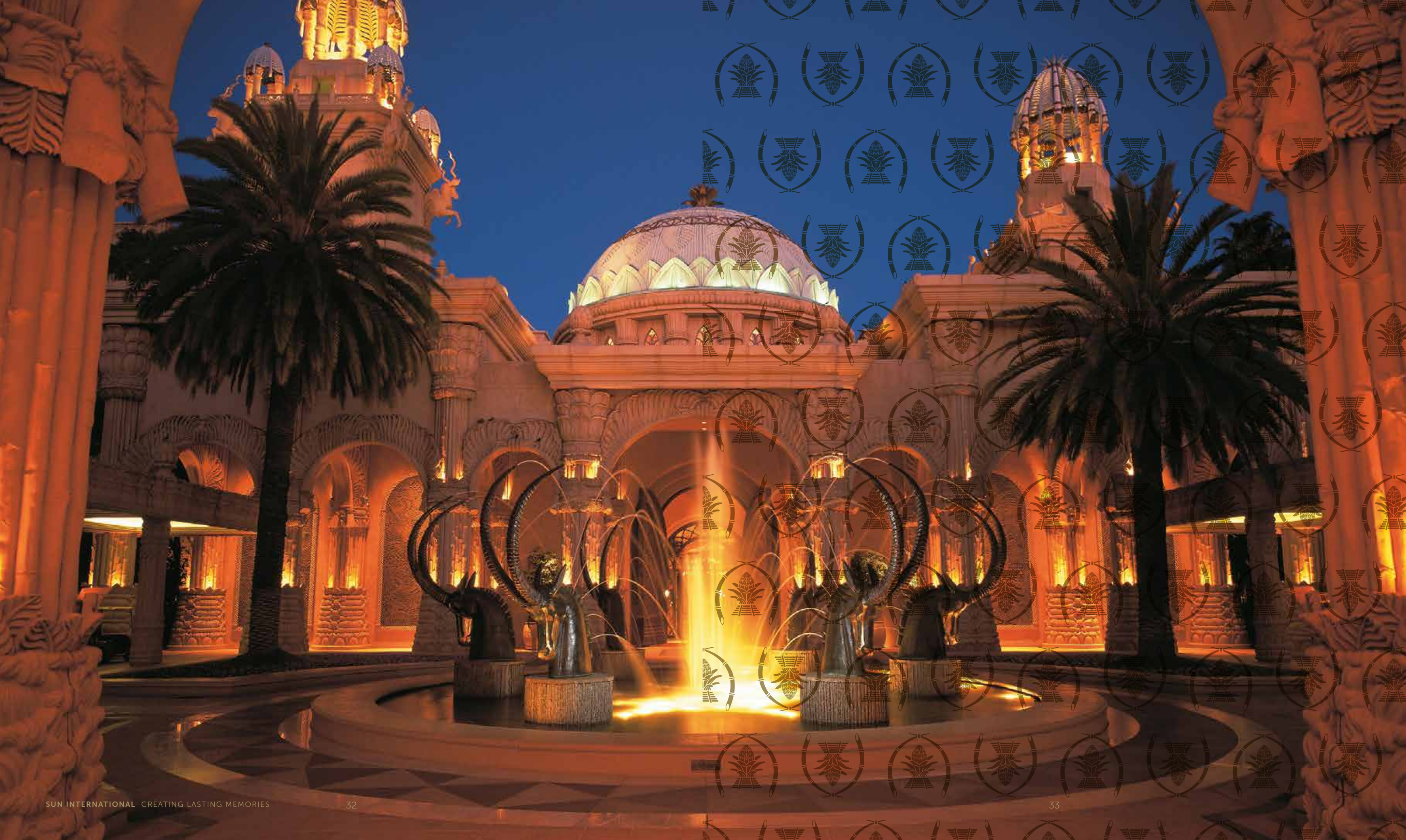
- 20 ACTIVITY HUB & SEGAETSHO CULTURAL VILLAGE
- 21 ADRENALINE EXTREME
- 22 AVIARY
- 23 CHIMP & ZEE
- 24 CROCODILE VILLAGE
- 25 FINDER'S KEEPERS
- 26 FOREST OF LIGHTS
- 27 GAMMON GOLF ACADEMY
- 28 GARY PLAYER GOLF COURSE
- 29 KAMP KWENA
- 30 LONG JOHN SILVER BUMPER BOATS
- 31 MINI GOLF CABANAS
- 32 MINI GOLF SUN VACATION CLUB
- 33 MONKEY SPRING PLAZA
- 34 ROYAL BATHS
- 35 ROYAL STAIRCASE
- 36 STIMELA TRAIN
- 37 SUN STAR
- 38 TENNIS COURTS
- 39 THE BRIDGE OF TIME
- 40 THE LOST CITY GOLF COURSE
- 41 THE MAZE OF THE LOST CITY
- 42 THE PALACE GARDENS
- 43 THE SHEBEEN
- 44 TRACK & TRAIL
- 45 BREAKOUT ESCAPE GAME
- 46 WATERWORLD
- 47 WAVE POOL

VALLEY OF WAVES

- 48 ADVENTURE MOUNTAIN
- 49 BODY SLIDE - SCORPION
- 50 BODY SLIDE - TARANTULA
- 51 LAZY RIVER
- 52 SLIDE HILL
- 53 SLIDE - NOBLE'S DESCENT
- 54 SLIDE - OVANGO
- 55 TEMPLE OF COURAGE
- 56 TOWEL & UMBRELLA HIRE
- 57 TUBE SLIDE - MAMBA
- 58 TUBE SLIDE - VIPER
- 59 VONZIPPER

A world
within a City
Sun City







T +27 (0)11 780 7000

For more information visit suninternational.com

Sun International

SUN INTERNATIONAL SUPPORTS RESPONSIBLE GAMING. GAMING FOR PERSONS 18 YEARS AND OLDER. WINNERS KNOW WHEN TO STOP. NATIONAL RESPONSIBLE GAMBLING TOLL-FREE COUNSELLING HELPLINE 0800 006 008 OR SMS "HELP" TO 076 675 0710.