



---

IT'S POSSIBLE AT  
THE PALACE

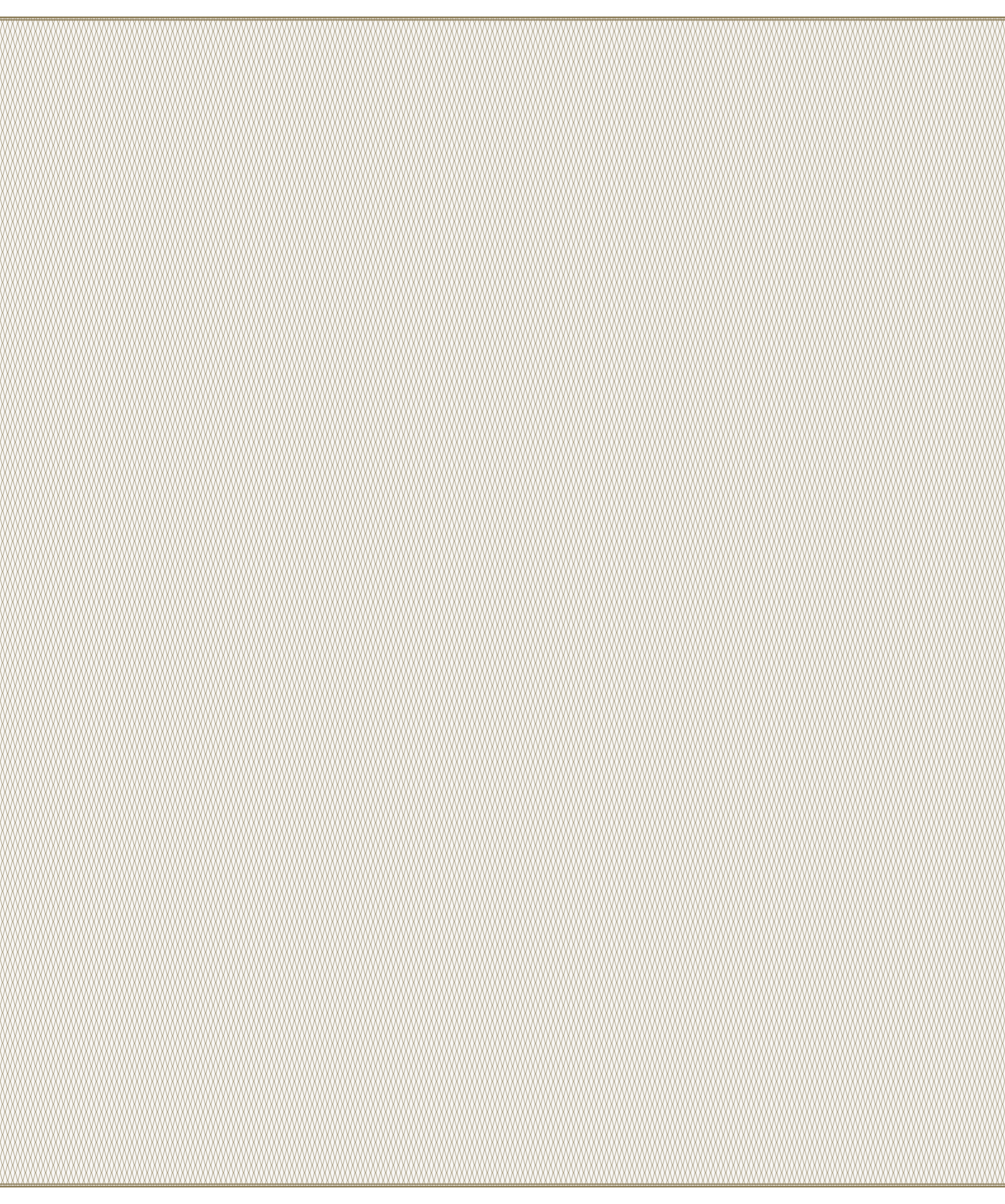
UNFORGETTABLE CELEBRATIONS

---

*Sun*

The Palace

---

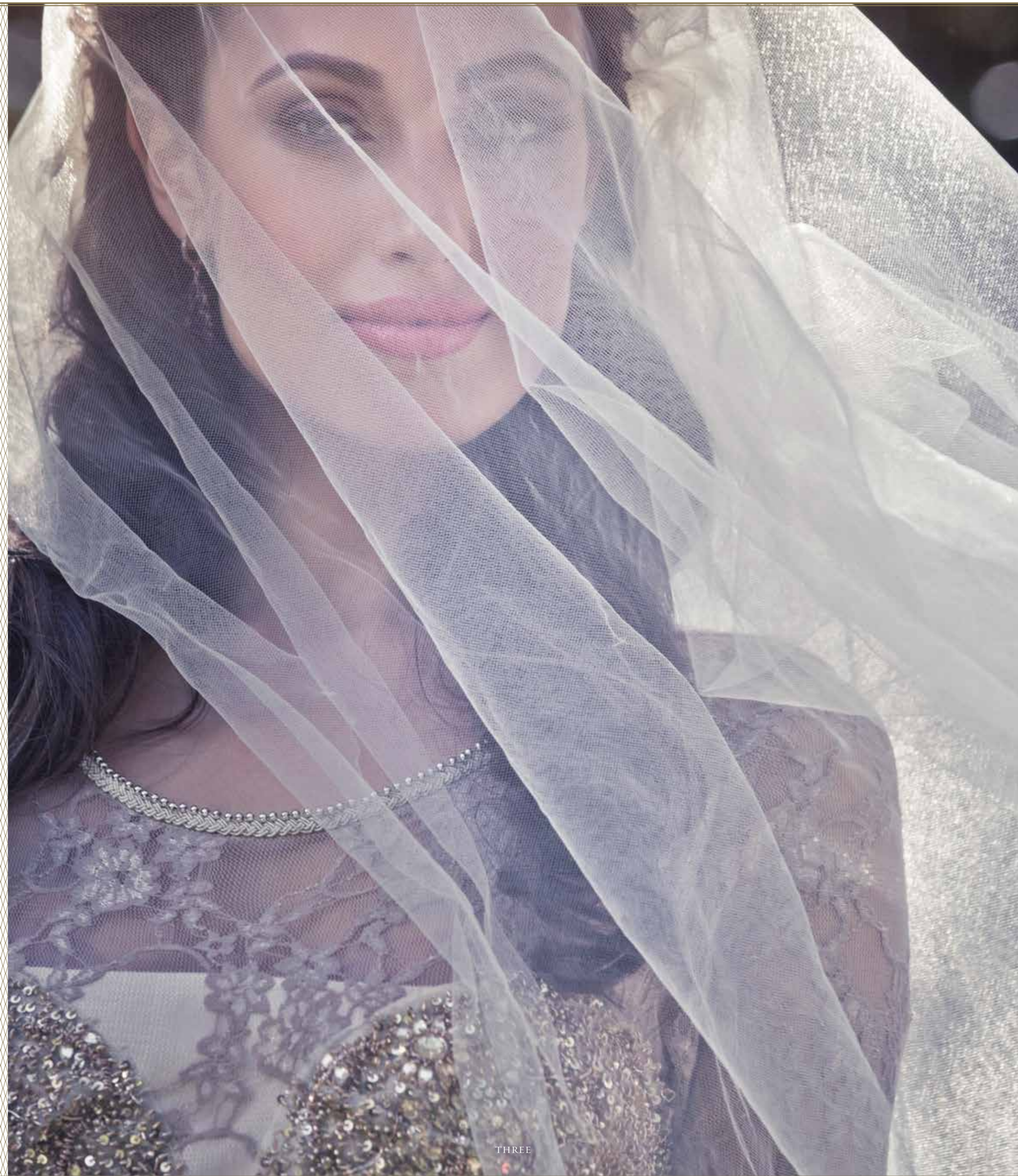


The Palace is a place that inspires possibility.

Every inch has been meticulously crafted, not only to lavish you with opulence, but also to create a sense of wonder and show you what can be done. And when it comes to weddings, nothing changes. Whether you want to walk down the aisle with lion cubs, say your vows from the King's Tower, or have your photo shoot in a hot-air balloon overlooking the Big 5, The Palace can make it happen.



TWO

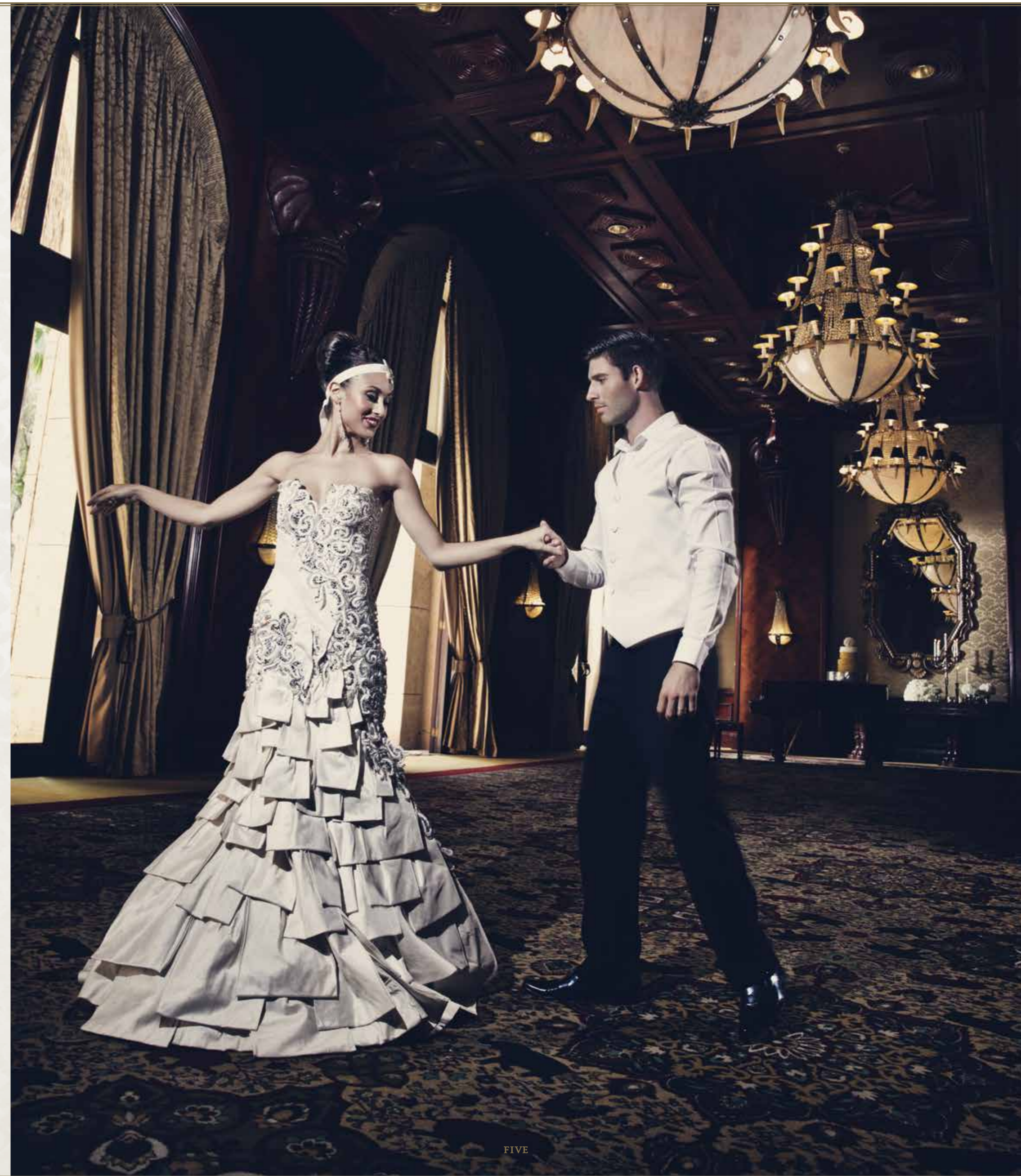


THREE

The plush Royal Chamber, located within the Elephant Quarter of The Palace, is a resplendent venue that makes a grand impression. It is ideally suited for a graceful ceremony or luxurious seated reception and opens onto the terrace and the magnificent Palace gardens.

Lawns can host up to 200 pax for light lunch or cocktail party or even outdoor high tea.

## THE ROYAL CHAMBER









## WELCOME TO AFRICA'S LEGEND

There is a legend of a city renowned for its wealth and beauty, nestled in a secluded valley known as the Valley of the Sun. At the heart of the city, surrounded by a sacred lake, stood a palace of unequalled magnificence, infused with the spirit of generosity and benevolence.

Protected by great timber and bronze gates, The Palace paid homage to its surroundings by integrating the natural beauty into its design. Sculptures of noble leopards acted as sentinels at the entrance; fountains fashioned after the tree-dwelling monkeys quenched the thirst of the people; and elephants, lions, kudus, birds and beasts of all kind were immortalised in stone and depicted in mosaics on vaulted ceilings, in mouldings, and on the flame-topped towers that rose from The Palace like beacons.

Inspired by its splendour and recreated based on whispered legends, we bring to you The Palace of the Lost City: A kingdom built in the same spirit as the legend of old.

This elegant and intimate venue is enhanced by the life size statue of Shawu, a great African Elephant, who was famous for its large size and spectacular tusks. Surrounded by the glorious architecture of The Palace, this is an excellent venue for pre-reception drinks.

IDEAL PRE-RECEPTION DRINKS VENUE FOR MAX  
300 STANDING GUESTS OR 150 SEATED  
BANQUET-STYLE

Scattered around The Palace are fourteen bronze sculptures created by the internationally renowned Danie de Jager. These include two fountains called the Sable Fountain and Cheetah Hunt, and the life-size bronze of one of the elephants from the Magnificent Seven, called Shawu. The Magnificent Seven were seven impressive elephant bulls, with tusks that weighed over 50kg each, that roamed the Kruger National Park. Shawu's tusks were over 3 metres long – his left tusk being the longest ever recorded in the Kruger National Park. Shawu was nearly 60 years old when he died, but he has been immortalised in a bronze masterpiece standing guard in the Elephant Courtyard of The Palace.

### SHAWU

ONE OF THE MAGNIFICENT SEVEN. DIED OCTOBER 1982  
LEFT TUSK LENGTH 3.17M (10'4") WEIGHT 52.6KG (116LB)  
RIGHT TUSK LENGTH 3.06M (10'0") WEIGHT 50.8KG (112LB)  
SCULPTOR DANIE DE JAGER 1990

## THE WIND CHIME CHAPEL

The enchanting Wind Chime Chapel is situated in the beautiful lush gardens adjacent to The Palace and the Lost City Golf Course. This outdoor location is truly magical and is perfect for a relaxed barefoot luxury ceremony and wedding reception.

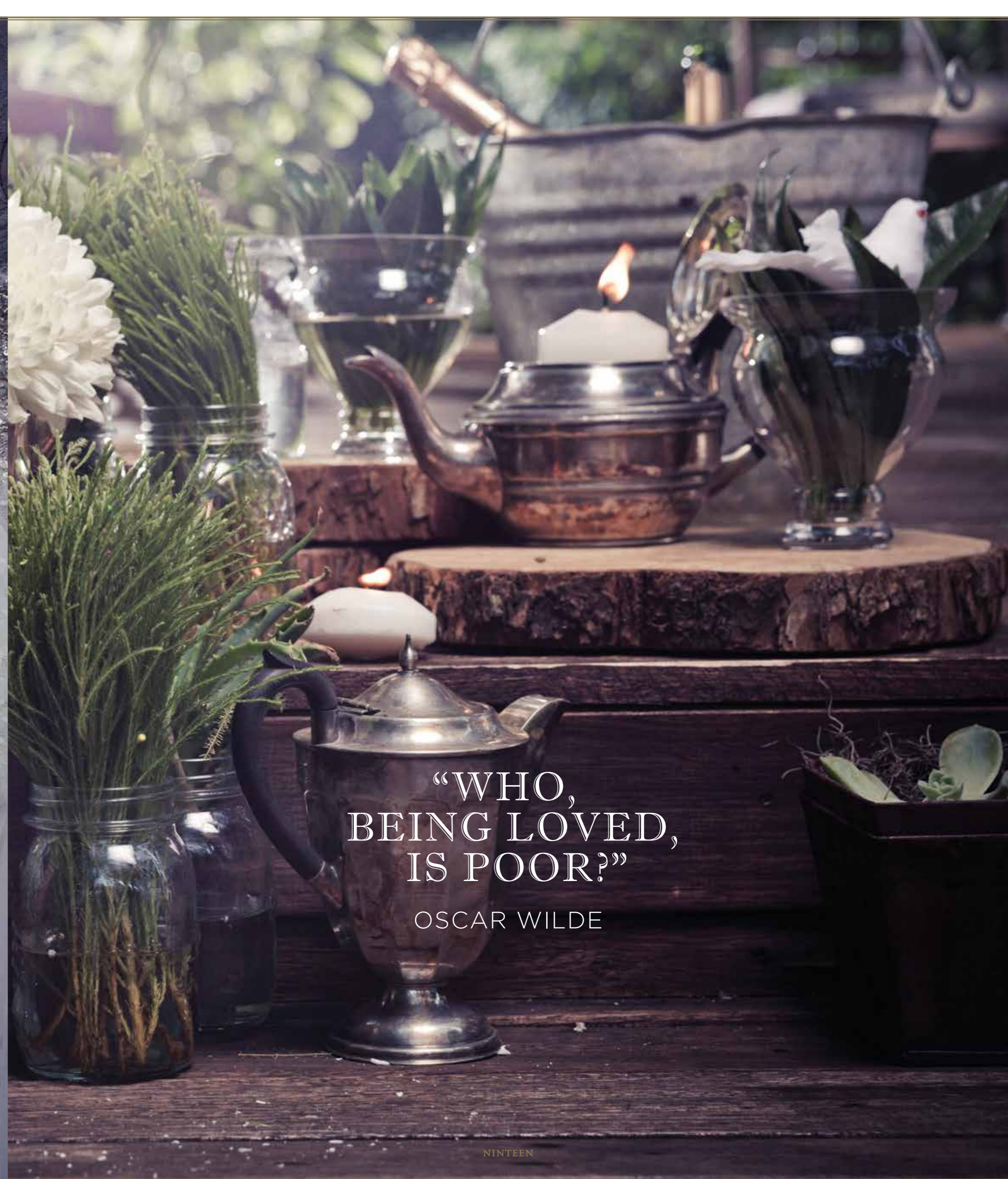
Hosts 80 to 100 guests cinema style.











“WHO,  
BEING LOVED,  
IS POOR?”

OSCAR WILDE





THE KING'S SUITE



THE KING'S SUITE BALCONY

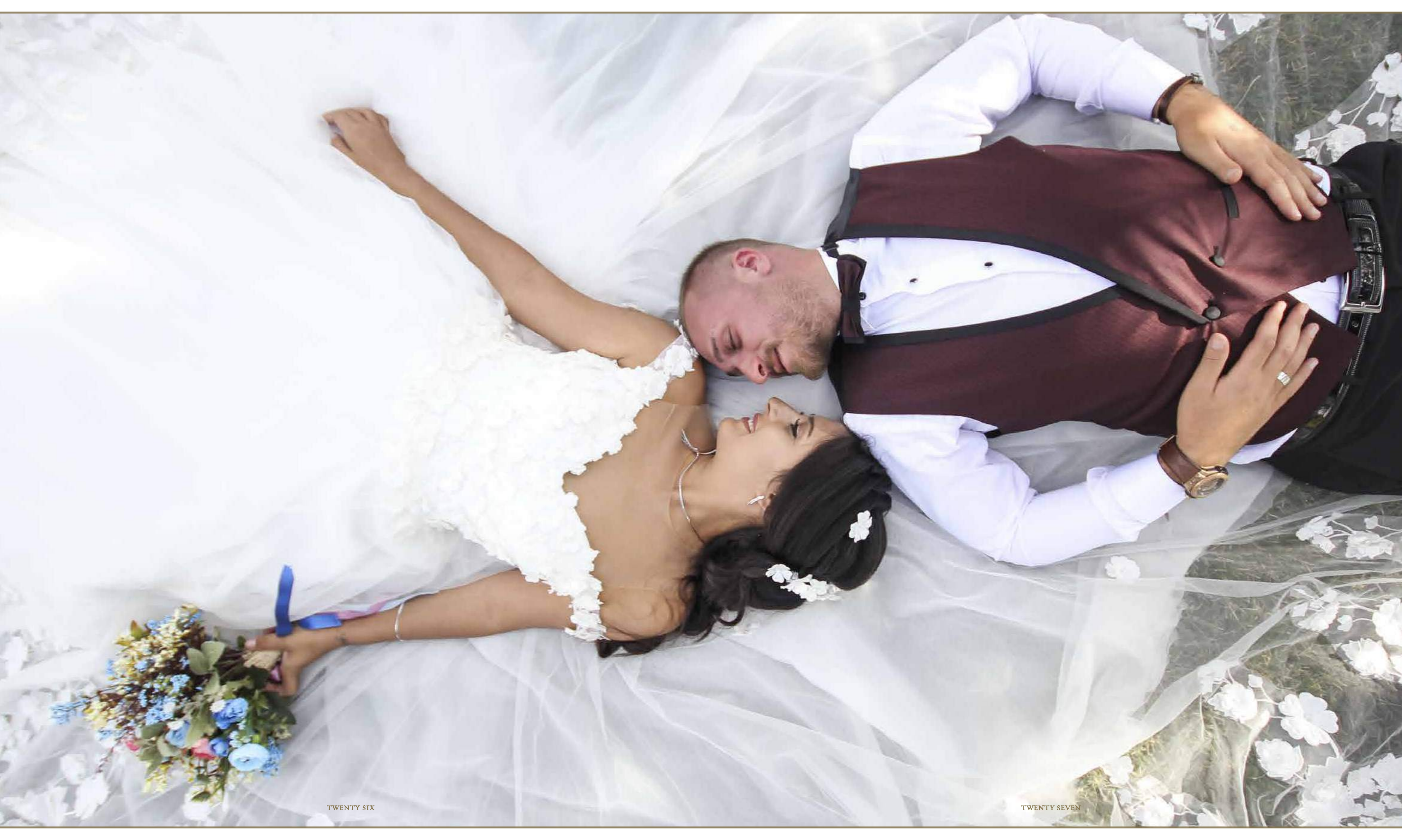


## THE BAOBAB OUTLOOK

The Baobab Outlook is nestled in the lush and lovely gardens of The Palace and is accessed from the hotel. At night, the lights of The Palace and its towers form a glorious backdrop to a magical setting.

Can house a Gazebo or Marquee or Private picnics for 100 pax up. Caters for 250 pax







## IT'S TIME TO BE INTRIGUED BY THE ANCIENT

From its inception in 1992, The Palace of the Lost City has enthralled and amazed visitors from all over the globe. This addition to the Pilanesberg landscape is dwarfed in years by the 1,300-million-year-old extinct volcanic site on which it is built.

The 55,000-hectare, malaria-free Pilanesberg National Park borders on the Sun City complex. It was opened in 1979, and is to date the largest game resettlement project in the history of South Africa. The Mankwe Lake, a game draw-card, marks the centre of the ancient volcano.

The term "Super Seven" was coined for the Park, as cheetah and wild dogs can be found here, in addition to elephant, lion, leopard, rhino and buffalo. The diverse vegetation supports a wealth of other mammal, bird, reptile and tree species.

Danië de Jager's bronze wildlife sculptures in the grounds of The Palace of the Lost City pay powerful homage to these living treasures.

Explore the option of a guided game drive or a hot-air balloon safari for unforgettable viewing opportunities.



# THE KING'S TOWER

The King's Tower is magnificently located at the highest point in The Palace and overlooks the entire expanse of the Sun City Resort with extraordinary views of the Pilanesberg. This setting is adorned with regal kudu statues which act as sentinels, fit for a King.

Caters for a maximum of 4 pax private dining.



# THE CROCODILE LOUNGE

The exclusive Crocodile Lounge overlooks the picturesque Lost City Golf Course, and is the perfect venue for a wedding reception. The venue opens up onto a terrace creating an ideal indoor / outdoor experience.







THIRTY FOUR



THIRTY FIVE

## THE PALACE

Resident-only Hotel : 336 Luxury Rooms including 15 Suites.

### THE PALACE OF THE LOST CITY SPECIAL RECOMMENDATIONS

#### THE ROYAL SPA

Take some time for yourself and enjoy a massage in the privacy of your room or at the Palace Pool.

#### RESTAURANTS AT THE PALACE

Enjoy fine dining at any of our three restaurants. Plume, The Grill Room and Tusk Bar.

#### HIGH TEA

Enjoy a traditional high tea served daily around the famous Elephant fountain in the Crystal Court.

#### LOST CITY GOLF COURSE (CARTED COURSE)

Designed by Gary Player, this 18-hole, par-72, desert-style course covers 100 hectares and incorporates extensive water features.

#### VALLEY OF THE WAVES

Roaring Lagoon, Temple of Courage, Tarantula, Scorpion, Viper, Mamba and Lazy River – take your pick from this water park complete with lagoon, beach, waves, body slides and tube rides.

### OTHER VENUES AT THE PALACE

#### TIMELESS INTERIORS

Picnic hosts up to 100 pax

#### ORCHID AND PROTEA ROOMS

Formal seating dining up to 50 pax

#### THE PALACE POOL DECK

Hosts up to 250 seating formal dining also offers cocktail party for 250 pax in the same venue at the same time.

## SUN CITY

The Cascades: 243 Luxury Rooms including 10 Suites.  
Soho: 340 Luxury Rooms including 8 Suites.  
Cabanas: 380 Rooms.

Did you know that the Sun City Resort offers 101 Activities?

### SUN CITY SPECIAL RECOMMENDATIONS

#### PILANESBERG NATIONAL PARK

This malaria-free Big 5 Reserve is a wildlife treasure trove.

#### SUN CENTRAL

Home to the Movie Zone, eateries, speciality stores and sports bars.

#### THE SUN CITY CASINO

A unique resort gaming experience that offers an extensive selection of various table games and slots.

#### GARY PLAYER GOLF COURSE (WALKING COURSE)

This 18-hole, par-72 world-class course attracts many of the world's highest ranked players. Its multiple tees will please both novice and skilled professional.

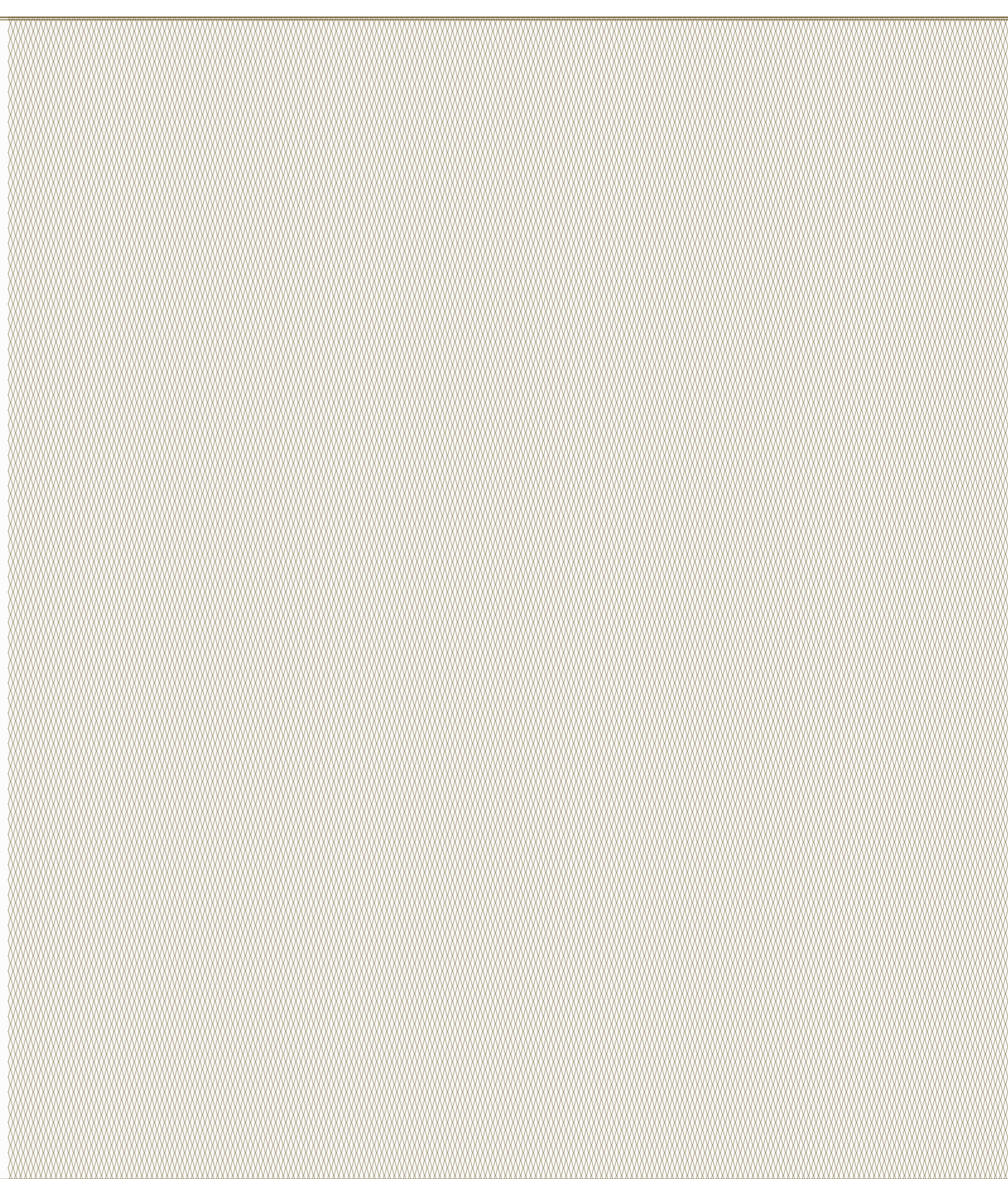
#### WATERWORLD

Combine the excitement of parachuting, the thrill of water sports and parasailing, or ride a wave on a jet ski.

#### THE MAZE OF THE LOST CITY

Celebrate finding your way through one of the largest permanent mazes in the Southern Hemisphere followed by a cold refreshment at the Maze bar.







*Sun*

## The Palace

THE PALACE OF THE LOST CITY  
Sun City Resort 0316, North West Province  
PO Box 308, Sun City Resort 0316, North West Province, South Africa  
Telephone +27 (0) 14 557 4307, Facsimile +27 (0) 14 557 3111  
[www.suninternational.com](http://www.suninternational.com)