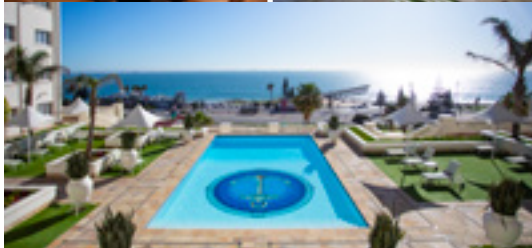
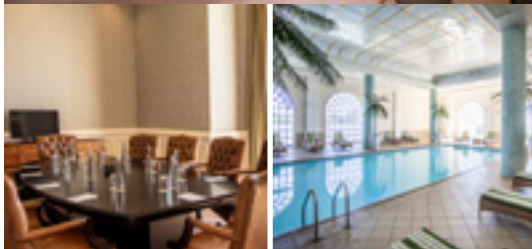
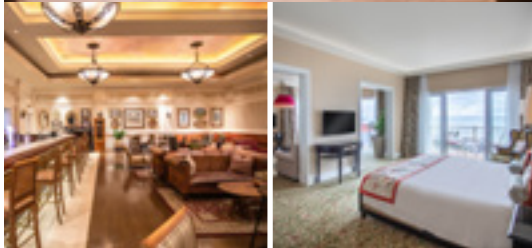




Boardwalk



Why stay here?

- Boardwalk's stunning beachfront location is the ideal resort for locals, tourists and corporate travellers.
- Its graceful Victorian-style architecture is renowned among travellers for being the best hotel in Gqebera.
- Boardwalk offers secure and direct access to a vibrant casino, and a cinema and entertainment facilities within the mall.
- The architectural design is Victorian, combined with contemporary charm and panoramic views of golden beaches, Shark Rock Pier and the Indian Ocean.
- Guest rooms are comfortably appointed, in a mid-century décor style with modern conveniences such as LED TVs, luxurious beds, mini bars and bijou balconies.
- Positioned on the Golden Mile and within easy walking distance to Hobie Beach.
- Boardwalk has an airport shuttle service and complimentary parking for hotel guests.
- Enjoy free uncapped high-speed WiFi throughout the hotel and ICC.
- Fully equipped business centre and several boardrooms, all complete with modern facilities and technology.

Accommodation

140 rooms in total, including:

- 35 x Luxury twin rooms – 35m² – Situated on floors 1 to 4. Twin beds side by side – beds can be split. Separate bath and shower facilities.
- 66 x Luxury king rooms – 35m² – Situated on floors 1 to 4. 1 x king size bed (and a sleeper couch). Separate bath and shower facilities. Rollaway bed on request at an additional fee.
- 4 x Superior luxury rooms – 71m² – Situated on floors 1 to 4. 1 x king size bed. Separate bath and shower facilities. Can be inter-leading with a luxury twin room.
- 16x Luxury Family Rooms Situated on floors 1 to 4. 1 x king size bed and a sleeper couch Separate bath and shower facilities.
- 8 x Superior luxury suites – 88m² – Situated on floors 1 to 4. 1 x king size bed. Separate bath and shower facilities. Separate lounge and dining room table (seating 4). Rollaway bed on request.
- 2 x Luxury accessible rooms – 35m² – Situated on floors 1 and 2. 1 x king size bed. Separate bath and shower facilities with handrails. Wider doorways to allow for easy wheelchair access. Can be inter-leading with a Luxury twin room.
- 8 x Junior Suites (Duplex) – 62m² – Situated on the 4th floor. 1 x king size bed. Separate bath and shower facilities. Separate lounge and dining room table (seating 4) (35m²) on the entrance level (4th floor) with an internal staircase leading up to the bedroom (27m²) on the top floor. Guest toilet.
- 1 x Presidential Suite 1 – 72m² – Situated on the 2nd floor. 1 x king size bed. Separate bath and shower facilities. Separate lounge and dining room table (seating 6). Guest toilet. Rollaway bed on request. Can be inter-leading with a Luxury Twin room.

Facilities

There's a broad spectrum of culinary treats available with a wide range of fast food outlets. The myriad of flavours satisfy every palate.

- Kiplings Restaurant - located in the Boardwalk Hotel, will take guests on a gourmet journey, using the freshest produce. Buffet breakfast is served. Seating capacity: 50
- Tshawe Bar - named after King Tshawe, offers a selection of premium beverages and fine cigars. This is a smoking venue. Seating capacity: 50
- Lobby Lounge - a relaxing and spacious area. Light meals are available daily. Seating capacity: 50
- Bayside Pantry - situated in the non-smoking section of the casino. Seating capacity: 50
- Privè Bar - is situated inside the exclusive Privè Bar and is a private area for players who enjoy secluded gaming. Full service bar and snack menu.
- Camelot Spa features holistic massage and treatment rooms, steam rooms, hydrotherapy tubs and an indoor heated pool.
- Outdoor pool overlooking the Indian Ocean
- Onsite travel desk for all travel needs ranging from airport transfers to day excursions
- Festival Lawn - ideal venue for hosting picnic-style events.
- Golf - The Humewood Links Golf Club is located 10 minutes away.
- Fitness Centre.
- Boardwalk Mall.

BOARDWALK

Boardwalk, 2nd Avenue Summerstrand,
Gqebera 6001, South Africa
Private Bag 777, Humewood 6013, South Africa
GPS: E 25° 39' 29.25.9" S 33° 59' 13.6"
Tel: +27 41 507 7777
Email: crobook@suninternational.com
suninternational.com

Boardwalk Gqebera @BoardwalkPE



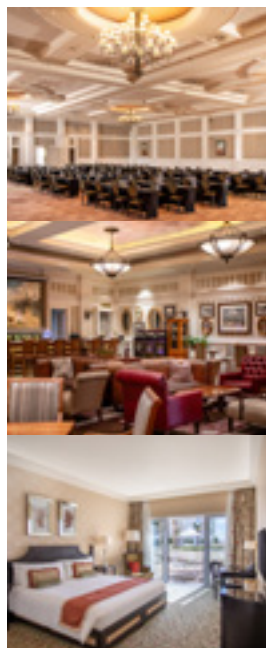
- ◆ Chief Dawid Stuurman International Airport 5km/10 mins
- ◆ Gqebera CBD 5km/10 mins
- ◆ Hobie Beach 5 mins
- ◆ East London 300km
- ◆ Cape Town 800km
- ◆ Gauteng 1100km



Event and Entertainment Venues

The Boardwalk International Convention Centre is one of the Sunshine Coast's most accomplished hosts. Located on the beachfront, this flexible space offers spacious facilities along with a wealth of options to enhance any meeting or conference. It contains more than 3 000m² of meeting space and breakaway rooms and is able to accommodate large conference groups and events.

Venue	Banquet					Cinema			School room	Exhibition	Cocktails	U-shape	Board room
	Stage	Stage buffet	Stage buffet dance	Stage dance served	Stage rear projection buffet	Stage	Stage rear projection	Sports style raised platform	Stage	3x3 Stage			
Tsitsikamma													
A	1000	800	700	950	800	1600	1600	1600	900	90	1600	-	-
B.1/B2	400	350	300	350	300	700	650	700	450	45	800	-	-
C.1/C.2	250	200	180	200	180	400	350	400	210	30	400	-	-
D.1/D.2	100	90	70	90	-	200	175	200	120	15	50	-	-
Breakaway Rooms													
Stinkwood	-	-	-	-	-	20	-	-	16	-	-	10	10
Redwood	-	-	-	-	-	20	-	-	16	-	-	10	10
Ironwood	-	-	-	-	-	20	-	-	16	-	-	10	10
Yellowwood 1	-	-	-	-	-	20	-	-	16	-	-	10	10
Yellowwood 2	-	-	-	-	-	20	-	-	16	-	-	10	10



Venue	Door Width	Door Height	Height	Room Length	Room Width	m ²	m ³
Tsitsikamma							
A (Full)	14m	2.4m	6.0m	49.645m	39.0m	1 880m ²	11 280m ³
B.1 (½)	14m	2.4m	6.0m	39.0m	24.8m	947.8m ²	5 686.8m ³
B.2 (½)	14m	2.4m	6.0m	39.0m	24.84m	932.2m ²	5 593.2m ³
C.1 (¼)	14m	2.4m	6.0m	24.8m	19.5m	456.2m ²	2 856m ³
C.2 (¼)	14m	2.4m	6.0m	24.8m	19.5m	456.2m ²	2 736m ³
D.1 (⅙)	14m	2.4m	6.0m	19.5m	11.49m	242.3m ²	1 453.8m ³
D.2 (⅙)	14m	2.4m	6.0m	19.5m	11.49m	213.8m ²	1 282.8m ³
Breakaway Rooms							
Stinkwood	14m	2.4m	4.5m	9.545m (10.585m)	5.832m	59m ²	265.5m ³
Redwood	14m	2.4m	4.5m	9.545m	5.885m	55m ²	247.5m ³
Ironwood	14m	2.4m	4.5m	9.545m	5.832m	54m ²	243m ³

Things To Do

- Access to beaches, rivers, lagoons and hiking trails.
- Coastal drives to Addo Elephant National Park, the Tsitsikamma Forest and the rugged Baviaanskloof Nature Reserve.
- Surf with dolphins.
- Bungee from one of the highest points in the world.
- Explore the picturesque 1820 Settler authenticity of Grahamstown and Bathurst.
- Protected areas for swimming, fishing, surfing, scuba diving, snorkelling and sailing.
- Day trip to the Tsitsikamma National Park, and get close to the Big 7 in Addo Elephant National Park, 72km away. The park is also sanctuary to a multitude of other wildlife species and offers a range of exciting eco-activities such as horse trails, 4x4 trail, hiking trails, game viewing and guided game drives.
- Donkin Heritage Trail.
- Take a walk through Settler history - the 5km Donkin Heritage Trail is a self-guided walk marked with a blue staggered line that takes you past 47 places of historical interest in the old Hill area of central Gqebera.
- Nelson Mandela Metropolitan Art Museum.
- Tsitsikamma National Park - The Tsitsikamma's spectacular scenery includes Indian Ocean breakers, rocky shores beneath 180m high cliffs, beautiful indigenous forest and Fynbos (Cape Floral Kingdom).
- Storms River Adventures - On offer are activities in and around the Tsitsikamma Park including canopy tours and walking trails.
- Bloukrans River Bridge Bungee Jumping - Situated along the Garden Route at the Tsitsikamma Forest Village Market, you will find the highest bungee jump in the world. The Bloukrans Bridge is 216 meters (709 feet) above the Bloukrans River.